



BVI

Innovative Ophthalmic Equipment and Instruments

Supporting Phaco, Vitreoretinal and Cryo Procedures

BVI offers a synthesis of advanced equipment providing functionality and reliability using innovative technologies to meet surgical requirements with a continued evolution of hardware and software options.



Table of Contents

Surgical Equipment.....	3	Air Injection Tube with Filter	13
R-Evolution®	3	Two-Ways Stopcock.....	13
R-Evo Smart®	4	Multi Use Consumables.....	14
Cryo-line	4	Cassette, I/A Tubing, Drainage Bag and Other	
Accessories for Cataract and Cataract/ Vitreoretinal Equipment.....	5	Accessories	14
Foot Pedals.....	5	Phaco Tip Wrench.....	14
Irrigation/Aspiration Handpiece for Cataract Surgery	5	Phaco Tips	14
Phaco Handpiece.....	5	Silicone Sleeves	14
Remote Control for R-Evolution® and R-Evolution® CR	5	Irrigation/Aspiration Cannulas for Cataract Surgery	15
Cart.....	5	Diathermy	15
Sterilization Tray	6	Eso-Diathermy	15
Filters	6	Dual Luer Connector	15
Irrigating Solution Continuity Guard	6	Reusable Accessories for Diathermy	15
Goggles	6		
Accessories for Cryo-Surgery Equipment.....	7		
Cart.....	7		
Cylinder Adapters.....	7		
Cryo Probes for Ophthalmic Cryo-Surgery	7		
Phaco Packs	8		
Phaco Packs for Cataract Surgery for R-Evolution® and R-Evo Smart®	8		
Fixed Components	8		
Variable Components	8		
Vitreoretinal Packs	9		
Vitreoretinal Packs for Vitreoretinal Surgery for R-Evolution® CR and R-Evo Smart® CR.....	9		
Fixed Components	9		
Variable Components	9		
Combined Packs	10		
Combined Packs for Combined Cataract and Vitreoretinal Surgery for R-Evolution® CR and R-Evo Smart® CR.....	10		
Fixed Components	10		
Variable Components	10		
Basic Packs.....	11		
Other Devices for Irrigation/Aspiration for Cataract and Vitreoretinal Surgery	11		
Air Controlled Irrigation Device	11		
Screen Cover and Mayo Drape for R-Evo Smart®	11		
Single Use Consumables	12		
Posterier Vitrectomy Probe	12		
Endo Illumination Probes for Vitreoretinal Surgery.....	12		
Valved Trocar Kit.....	12		
Endo Diathermy Probes.....	12		
Stand Alone Devices and Kits	13		
Endo Laser Probes for Vitreoretinal Surgery	13		
Automatic Balanced Saline Solution/Air Infusion Control System	13		
Adapter Syringe Tubing.....	13		
Silicone Oil Injection/Removal Kit	13		

Surgical Equipment

R-EVOLUTION®

R-Evolution® Ophthalmic Equipment is available in two configurations for cataract and for cataract and vitreoretinal surgery. R-Evolution® offers a wide range of options to advance access to micro-incisional combined surgery, including: AGILE™ Fluidics Control with IOP management through advanced microprocessor-controlled Active Infusion and the proprietary algorithm “Dynamic IOP Control” acting synergistically to mitigate surge and IOP fluctuations by adjusting IOP in response to varying aspiration demand. Moreover the equipment offers switchable flow/vacuum based aspiration modalities. Optimized Energy Management with Minimal Stress™ technology for consistent phaco tip elongation regardless of cataract grade and multiple proven U/S power emission protocols through a wide portfolio of proprietary phaco tip and 40 KHz phaco handpiece. For vitreoretinal application, it offers a wide range of single use devices to support 23G, 25G and 27G procedures and built in LED Lighting System with three independent LED light sources with selectable colour filters for enhanced visualization, free of harmful UV and IR emissions, and integrated Green Laser Module 532 nm for endo-photocoagulation.

User Interface: large and high visibility 19” touch screen, wireless foot pedal programmable as single or dual linear, programmable voice and audio fee-back and remote control.



EQUIPMENT FOR CATARACT/VITREORETINAL SURGERY

Description	SKU #
R-Evolution® CR	121012
Integrated endo-laser upgrade for R-Evolution® CR	128910

EQUIPMENT FOR CATARACT SURGERY

Description	SKU #
R-Evolution® (peristaltic and rotary vane pumps)	111012



Surgical Equipment

R-EVO SMART®

R-Evo Smart® is a convenient compact modular system for cataract surgeons, fusing performances and functionality and capable of supporting also posterior segment procedures. It is designed in 3 configurations with peristaltic pump only (R-Evo Smart® E), dual pump for anterior segment surgery only (R-Evo Smart® S) and dual pump for anterior and posterior segment surgery (R-Evo Smart® CR).

R-Evo Smart® offers access to a wide portfolio of single-use and reusable devices to support anterior and posterior eye-segment procedures. R-Evo Smart® features: AGILE™ Fluidics Control with IOP management through advanced microprocessor-controlled Active Infusion and the proprietary algorithm “Dynamic IOP Control” acting synergistically to mitigate surge and IOP fluctuations by adjusting IOP in response to varying aspiration demand. Moreover the equipment offers switchable flow/vacuum based aspiration modalities. Optimized Energy Management with Minimal Stress™ technology for consistent phaco tip elongation regardless of cataract grade and multiple proven U/S power emission protocols through a wide portfolio of proprietary phaco tip and 40 KHz phaco handpiece. For vitreoretinal application, it offers a wide range of single-use devices to support 23G and 25G procedures and built in LED Lighting System with 2 independent LED light sources with selectable colour filters for enhanced visualization, free of harmful UV and IR emissions.

User Interface: high visibility 15” touch screen advanced foot pedal programmable as single or dual linear.



EQUIPMENT FOR CATARACT/VITREORETINAL SURGERY

Description	SKU #
R-Evo Smart® CR	121013

EQUIPMENT FOR CATARACT SURGERY

Description	SKU #
R-Evo Smart® E (flow-based pump only)	111009
R-Evo Smart® S (flow and vacuum based pumps and Venturi pumps)	111010

CRYO-LINE

Cryo-line is a fully pneumatic system for ophthalmic cryo-surgery employing CO2 or N2O as cryogenic gases. It is available for retina and eye-adnexa applications with a complete set of reusable cryo-probes. The system features application time, cylinder adapters, gas filter cartridges and temperature control for precise treatment.

EQUIPMENT FOR OPHTHALMIC CRYO-SURGERY

Description	SKU #
Cryo-line	131002



Accessories for Cataract and Cataract/Vitreoretinal Equipment

FOOT PEDALS



Description	SKU #
Foot pedal, wireless dual/single linear, R-Evolution® and R-Evolution® CR	112104
Foot pedal, dual/single linear, R-Evo Smart® E, S and CR	112105

REMOTE CONTROL FOR R-EVOLUTION® AND R-EVOLUTION® CR



Description	SKU #
Remote control for R-Evolution® and R-Evolution® CR	122007

Qty: 1/Bx

IRRIGATION/ASPIRATION HANDPIECE FOR CATARACT SURGERY



Qty: 1/Bx

Description	SKU #
Coaxial I/A handpiece, long barrel	114101

To be used in conjunction with any interchangeable I/A cannulas available in the multiuse section.

HANDPIECES



114301



114302

Qty: 1/Bx

Description	SKU #
Bimanual I/A, Irrigation cannula	114301
Bimanual I/A, Aspiration cannula	114302

PHACO HANDPIECE



113101



113107

Qty: 1/Bx

Description	SKU #
Phaco handpiece - Slim 4	113101
Phaco handpiece - Six	113107

CART

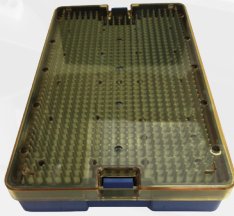


Qty: 1/Bx

Description	SKU #
Cart with integrated IV pole for R-Evo Smart® E, S and CR	181006

Accessories for Cataract and Cataract/Vitreoretinal Equipment

STERILIZATION TRAY



Qty: 1/Bx

Description	SKU #
Sterilization tray 16 x 26.5 x 4 cm for phaco and I/A handpieces	116003

IRRIGATING SOLUTION CONTINUITY GUARD



Qty: 1/Bx

Description	SKU #
Irrigating Solution Continuity Guard	181007

FILTERS

Qty: 1/Bx

Description	SKU #
Filter, passive protection for Zeiss and Moller microscopes	0MR340833
Filter, passive protection for Leica microscopes	0MR340846
Filter, passive protection for Topcon microscopes	0MR340897
Filter, passive protection for 532 nm wavelength for Topcon microscopes	0MR340990
Filter, active protection for Leica microscopes	0MR340848
Filter, active protection for Zeiss and Moller microscopes	0MR340849
Filter, active protection for Topcon microscopes	0MR340898

GOGGLES

Qty: 1/Bx

Description	SKU #
Protective goggles, wavelength 532 nm	0MR640425

Accessories for Cryo-surgery Equipment

CART



Qty: 1/Bx

Description	SKU #
Equipment cart with gas cylinder holder	183001

CYLINDER ADAPTERS



132008

132009

132010

Qty: 1/Bx

Description	SKU #
Gas cylinder adapter for nitrous oxide N2O (ISO5145 standard)	132008
Gas cylinder adapter for nitrous oxide (French standard)	132010
Gas cylinder adapter for carbon dioxide (ISO5145 standard)	132009

CRYO PROBES FOR OPHTHALMIC CRYO-SURGERY



133002



133004



133005



133006

Qty: 1/Bx

Description	SKU #
Cryo probe for retina, Ball	133002
Cryo probe for retina, "T" shaped	133004
Cryo probe for retina, "Bonnet"	133005
Cryo probe for glaucoma	133006



Phaco Packs

PHACO PACKS FOR CATARACT SURGERY FOR R-EVOLUTION® AND R-EVO SMART®

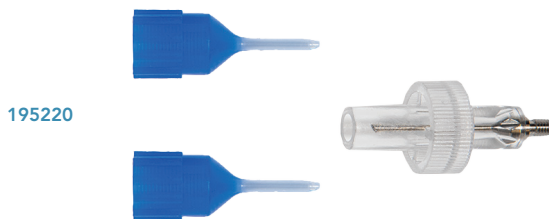
This configuration supports AGILE™ Fluidics Control (Active Fluidics) that minimizes post-occlusion break surge and stabilizes the eye across all steps of the procedure. Moreover, phaco tip pre-assembled with single-use phaco-tip wrench will drive work-flow efficiency.

FIXED COMPONENTS

Description
EasySys I/A cassette with drainage bag
Drapes (screen/Mayo arm)
Air controlled irrigation
Administration set
Test chamber



VARIABLE COMPONENTS



195220

Qty: 10/Bx

Description	Sleeve	Phaco Tip, Assembled on Tip-wrench	SKU #
AGILE™ Phaco Pack 20G F	2x Blue	20G Flared	195220
AGILE™ Phaco Pack 20G FB	2x Blue	20G Flared bent	195320
AGILE™ Phaco Pack 20G S	2x Blue	20G Straight, 30 degrees	195120
AGILE™ Phaco Pack 21G F	2x Yellow	21G Flared	195221
AGILE™ Phaco Pack 21G FB	2x Yellow	21G Flared bent	195321
AGILE™ Phaco Pack 21G S	2x Yellow	21G Straight, 30 degrees	195121

S - Straight phaco tip

F - Flared phaco tip

FB - Flared bent phaco tip

More configurations of cataract procedure packs are available upon demand.

Vitreoretinal Packs

VITREORETINAL PACKS FOR VITREORETINAL SURGERY FOR R-EVOLUTION® CR AND R-EVO SMART® CR

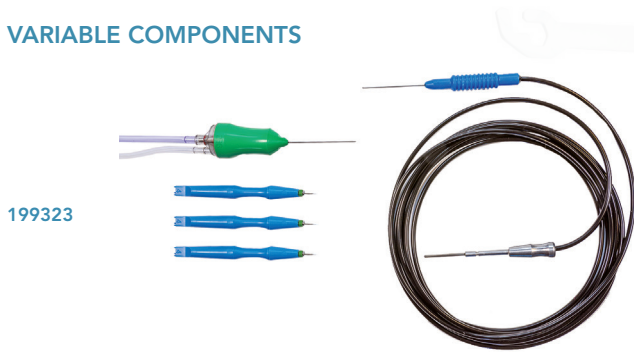
Twedge™ VitPack provides the largest portfolio of single-use devices for vitreoretinal procedure, supporting 23G, 25G and 27G pars plana vitrectomy with AGILE™ Fluidics Control and fluid/air exchange set with automatic valve and two-ways stopcock.

FIXED COMPONENTS

Description
EasySys I/A cassette with drainage bag
Drapes (screen/Mayo arm)
Air controlled irrigation
Administration set
Two-ways stopcock
Fluid/air exchange set with automatic valve



VARIABLE COMPONENTS



199323

Qty: 5/Bx

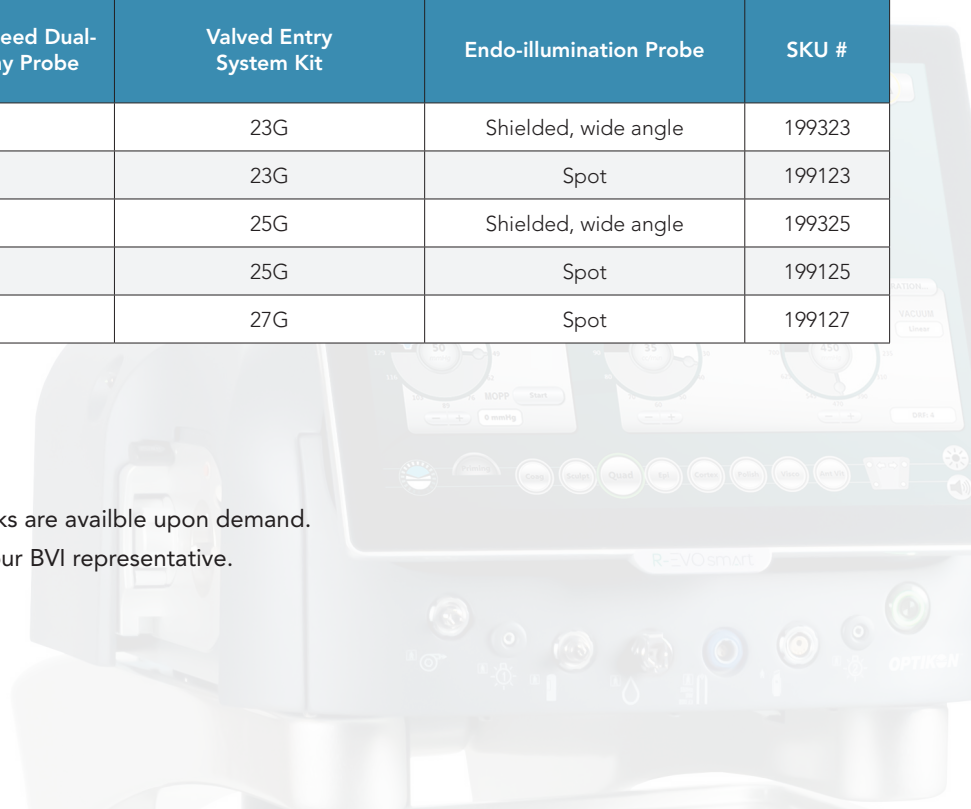
Description	Twedge™ High Speed Dual-blade Vitrectomy Probe	Valved Entry System Kit	Endo-illumination Probe	SKU #
23G Twedge™ VitPack SH	✓	23G	Shielded, wide angle	199323
23G Twedge™ VitPack SP	✓	23G	Spot	199123
25G Twedge™ VitPack SH	✓	25G	Shielded, wide angle	199325
25G Twedge™ VitPack SP	✓	25G	Spot	199125
27G Twedge™ VitPack SP	✓	27G	Spot	199127

SP - Spot endo-illumination

SH - Shielded wide angle endo-illumination

More configurations of cataract procedure packs are available upon demand.

*For more Vitreoretinal Pack, please contact your BVI representative.



Combined Packs

COMBINED PACKS FOR COMBINED CATARACT AND VITREORETINAL SURGERY FOR R-EVOLUTION® CR AND R-EVO SMART® CR

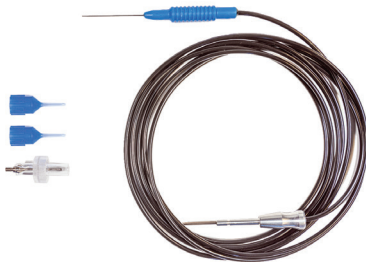
FIXED COMPONENTS

Description
EasySys I/A cassette with drainage bag
Drapes (screen/Mayo arm)
Air controlled irrigation
Administration set
Two-ways stopcocks
Fluid exchange set with automatic valve
Test chamber
Twedge™ high speed dual blade vitrectomy probe
One-step valved entry system kit



VARIABLE COMPONENTS

199323-20G F



Qty: 5/Bx

Description	Endo-illumination Probe	Sleeve	Phaco Tip, Assembled on Tip-wrench	SKU #
23G Twedge™ UniPack SH 20G F	Shielded, wide angle	2x Blue	Flared	199323-20G F
23G Twedge™ UniPack SP 20G F	Spot	2x Blue	Flared	199123-20G F
23G Twedge™ UniPack SH 20G FB	Shielded, wide angle	2x Blue	Flared bent	199323-20G FB
23G Twedge™ UniPack SP 20G FB	Spot	2x Blue	Flared bent	199123-20G FB
23G Twedge™ UniPack SH 21G F	Shielded, wide angle	2x Yellow	Flared	199323-21G F
23G Twedge™ UniPack SP 21G F	Spot	2x Yellow	Flared	199123-21G F
23G Twedge™ UniPack SH 21G FB	Shielded, wide angle	2x Yellow	Flared bent	199323-21G FB
23G Twedge™ UniPack SP 21G FB	Spot	2x Yellow	Flared bent	199123-21G FB

S - Straight phaco tip
F - Flared phaco tip

FB - Flared bent phaco tip
SP - Spot endo-illumination

SH - Shielded wide angle endo-illumination

More configurations of cataract procedure packs are available upon demand.

Qty: 5/Bx

Description	Endo-illumination Probe	Sleeve	Phaco Tip, Assembled on Tip-wrench	SKU #
25G Twedge™ UniPack SP 20G F	Spot	2x Blue	Flared	199125-20G F
25G Twedge™ UniPack SP 20G FB	Spot	2x Blue	Flared bent	199125-20G FB
25G Twedge™ UniPack SP 21G F	Spot	2x Yellow	Flared	199125-21G F
25G Twedge™ UniPack SP 21G FB	Spot	2x Yellow	Flared bent	199125-21G FB
25G Twedge™ UniPack SH 20G F	Shielded, wide angle	2x Blue	Flared	199325-20G F
25G Twedge™ UniPack SH 20G FB	Shielded, wide angle	2x Blue	Flared bent	199325-20G FB
25G Twedge™ UniPack SH 21G F	Shielded, wide angle	2x Yellow	Flared	199325-21G F
25G Twedge™ UniPack SH 21G FB	Shielded, wide angle	2x Yellow	Flared bent	199325-21G FB

S - Straight phaco tip FB - Flared bent phaco tip SH - Shielded wide angle endo-illumination
 F - Flared phaco tip SP - Spot endo-illumination

More configurations of cataract procedure packs are available upon demand.

Basic Packs

Qty: 10/Bx

Description	SKU #
EasySys irrigation/aspiration kit for R-Evolution® and R-Evo Smart®	192704
EasySys irrigation/aspiration kit for Assistant/Pulsar II - ESP	192703
Irrigation/aspiration kit for Pulsar II Minimal Stress: cassette, drainage bag and tubing	191703
Irrigation/aspiration kit for Pulsar II Minimal Stress: cassette with drainage bag	191704
Irrigation/aspiration kit for Pulsar with tubings, ACS3 device and drainage bag	191702



Other Devices for Irrigation/Aspiration for Cataract and Vitreoretinal Surgery

AIR CONTROLLED IRRIGATION DEVICE



Qty: 5/Bx

Description	SKU #
Air controlled irrigation device	190700

SCREEN COVER AND MAYO DRAPE FOR R-EVO SMART®



Qty: 10/Bx

Description	SKU #
Screen cover and Mayo drape for R-Evo Smart®	191616

Single Use Consumables

POSTERIOR VITRECTOMY PROBE

Twedge™ dual blade, high speed vitrectomy probe for 23G, 25G and 27G procedures, provide uninterrupted flow for vitreous removal at any cutting rate with minimal tractions to retinal tissues.



192315

Qty: 5/Bx

Description	SKU #
23G Twedge™ dual blade vitreous cutter	192313
25G Twedge™ dual blade vitreous cutter	192315
27G Twedge™ dual blade vitreous cutter	192317

ENDO ILLUMINATION PROBES FOR VITREORETINAL SURGERY



192808

Qty: 5/Bx

Description	SKU #
23G Shielded wide angle probe	192816
25G Shielded wide angle probe	192845
23G Endoillumination probe, multiport	192807
25G Endoillumination probe, multiport	192808
27G Spot endoillumination probe, multiport	192818
25G Chandelier with adjustable ring	192817

VALVED TROCAR KIT

This is a kit of valved entry-system build on trocar blade, for implantation assisted by a scleral marker.



192223

Qty: 10/Bx

Description	SKU #
23G Valved trocar kit	192223
25G Valved trocar kit	192225
27G Valved trocar kit	192227

ENDO DIATHERMY PROBES



192623

Qty: 5/Bx

Description	SKU #
23G Endo diathermy probe	192623
25G Endo diathermy probe	192625
27G Endo diathermy probe	192627

Please refer to: Reusable Devices for Surgical Equipment
Diathermy - Reusable Accessories for Diathermy

Stand Alone Devices and Kits

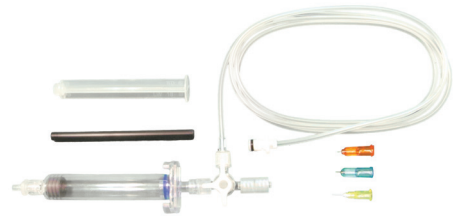
ENDO LASER PROBES FOR VITREORETINAL SURGERY

Qty: 5/Bx

Description	SKU #
23G Endo laser, straight, blue	OAK-0431/SMH
23G Endo laser, angled, blue	OAK-0435/SMH
25G Endo laser, straight, orange	OAK-0432/SMH
25G Endo laser, angled, orange	OAK-0436/SMH
27G Endo laser, straight, magenta	OAK-0433/SMH
27G Endo laser, angled, magenta	OAK-0437/SMH

More laser probe options available in the Vitreoretinal portfolio section of BVI Product Catalog

SILICONE OIL INJECTION/REMOVAL KIT



Qty: 5/Bx

Description	SKU #
Injection/removal silicone oil kit with 20G/23G/25G cannulas, single use (5 pcs)	192540

AUTOMATIC BALANCED SALINE SOLUTION/AIR INFUSION CONTROL SYSTEM



Qty: 5/Bx

Description	SKU #
Automatic balanced saline solution/air infusion control system	192550

AIR INJECTION TUBE WITH FILTER



Qty: 5/Bx

Description	SKU #
Air injection tube with filter	192513

ADAPTER SYRINGE TUBING

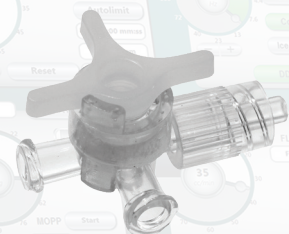
192516



Qty: 10/Bx

Description	SKU #
Adapter syringe tubing LLF	192519
Adapter for simultaneous connection air/minimal IOP	192516
Adapter syringe tubing LLF-Assistant/Pulsar II - ESP	192518

3-WAY STOPCOCK



Qty: 10/Bx

Description	SKU #
3-way stopcock	192514

Multi Use Consumables

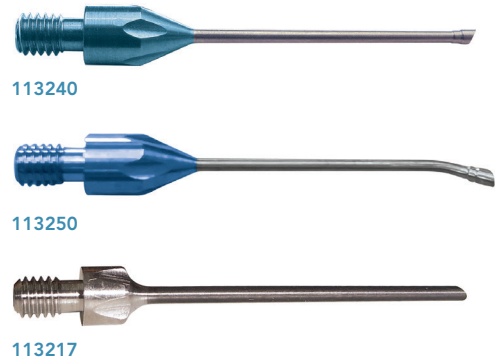
CASSETTE, I/A TUBING, DRAINAGE BAG AND OTHER ACCESSORIES



Qty: Varies/Bx

Description	SKU #
EasySys reusable I/A cassette for R-Evo Smart®, Qty: 2	117006
EasySys reusable cassette, drainage bag for R-Evo Smart®, Qty: 10	116002
EasySys reusable cassette, cassette-wrench for R-Evo Smart®, Qty: 1	116008
Irrigation/aspiration tubing set with ACS3 device for Pulsar, Qty: 1	117001
Irrigation/aspiration tubing set for Pulsar II Minimal Stress, Qty: 1	117004

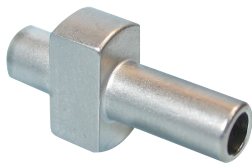
PHACO TIPS



Qty: 1/Bx

Description	SKU #
20G Flared phaco tip, 30 degrees, blue	113240
20G Flared bent phaco tip, 30 degrees, blue	113250
20G Standard phaco tip, 30 degrees, blue	113206
21G Flared phaco tip, 30 degrees, yellow	113241
21G Flared bent phaco tip, 30 degrees, yellow	113251
21G Standard phaco tip, 30 degrees, yellow	113237
22G Flared phaco tip, 30 degrees, green	113242
22G Standard phaco tip, 30 degrees, green	113209
Pars plana phaco tip	113217

PHACO TIP WRENCH



Qty: 1/Bx

Description	SKU #
Phaco tip wrench	113402

SILICONE SLEEVES



Qty: 3/Bx

Description	SKU #
Silicone sleeve for 20G tips - (2.8 mm incision), blue	113308
Silicone sleeve for 21G tips - (2.3 mm incision), yellow	113307
Silicone sleeve for 22G tips - (1.8 mm incision), green	113309

Multi Use Consumables

IRRIGATION/ASPIRATION CANNULAS FOR CATARACT SURGERY



114216

Qty: 1/Bx

Description	SKU #
20G Straight I/A cannula with silicone sleeve, blue	114216
20G Angled I/A cannula with silicone sleeve, blue	114217
21G Straight I/A cannula with silicone sleeve, yellow	114218
21G Angled I/A cannula with silicone sleeve, yellow	114219
22G Straight I/A cannula with silicone sleeve, green	114222
22G Angled I/A cannula with silicone sleeve, green	114223

To be used in conjunction with SKU: 114101, Coaxial I/A handpiece, long barrel

Diathermy

ESO-DIATHERMY



115301



115302

Qty: 1/Bx

Description	SKU #
Diathermy forceps	115301
Diathermy pencil eraser	115302

REUSABLE ACCESSORIES FOR DIATHERMY



115101

Qty: 1/Bx

Description	SKU #
Diathermy bipolar cable	115101





Tel: +39 06 8888355
Email: customersupport@bvimedical.com

